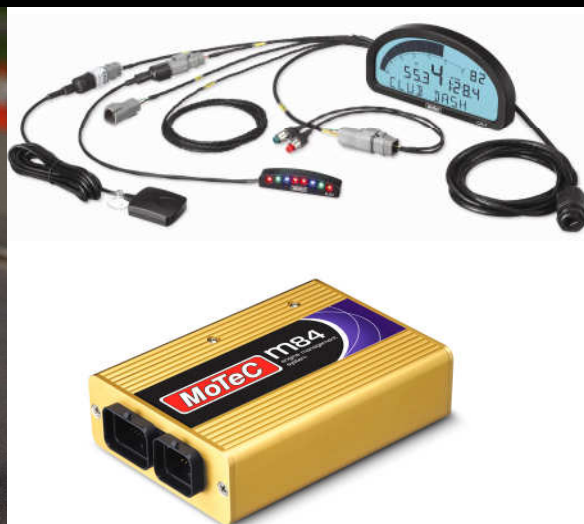




ENGINE MANAGEMENT &  
DATA ACQUISITION SYSTEMS

## RETAIL Price List - January 2012



Engine Management, Data Acquisition,  
Power Distribution & Accessories

[www.motec.com](http://www.motec.com)



## CONTACT

**MoTeC (Europe) Ltd**  
Unit 14, Twyford Mill Ind. Est.  
Oxford Road  
Adderbury  
Oxon  
OX17 3SX

<b>PHONE</b>	<b>+44 (0) 8700 119100</b>
<b>FAX</b>	<b>+44 (0) 8700 111922</b>
<b>WEB</b>	<b>www.motec.com</b>
<b>EMAIL</b>	<b>sales@moteceurope.co.uk</b>

## TERMS & CONDITIONS

- All prices quoted are in Pounds Sterling and are exclusive of VAT
- Freight charges are additional or by prior arrangement
- All MoTeC products are guaranteed for 2 years. Third-party products carry the warranty of the original manufacturer
- Contact MoTeC for details of your nearest authorised dealer
- Telephone orders MUST be confirmed by fax, post, or email
- Product and company names are trademarks or trade names of their respective companies
- Goods returned for credit must be received within 7 days from date of invoice in as new condition and include all supplied accessories. A 10% re-stocking fee will be applied to all returns received after this period.
- P.O.A. = Price On Application; T.B.C. = To Be Confirmed; F.O.C. = Free Of Charge



**Race smart.**

# ***Retail Price List Contents***

**RETAIL**

**JANUARY 2012**

<b>Section</b>	<b>Page No.</b>
CDL3	4
Power Distribution	5
i2 Activation Codes	6
Data Acquisition & Display	7 - 9
Beacon	9
GPS	10
Engine Management Systems	11 - 14
Plug-In Systems (OEM)	15
PWC Plug-In ECU Kits	16
ECU Accessories	17
Lambda Measurement	18
Ignition System Components	19
Communications Cables	20
Sensors	21-24
Wiring & Connectors	25-29
Accessories	30
'Race smart.' Clothing	31
Training & Support Services	31
Repairs, Testing & Upgrades	31





### CDL3 & Accessories

RETAIL

JANUARY 2012

The CDL3 is built with the same technology and quality as our top of the range Dash Loggers to give entry level racers the professional edge. It is a configurable unit that can be expanded with I/O options, and can be purchased standalone or as part of our new CDL3 Track Kits.

- 8Mb logging memory for data analysis with i2
- Light weight, programmable with adjustable backlight
- Capable of display, logging and controlling all in one
- User defined screen layouts, messages and warnings
- 3 pages (for Warm Up, Practice and Race)
- 1 x CAN with programmable bus speed
- 1 x RS232 (for GPS input)
- 1 x additional selectable RS232 or CAN port



#### CDL3 & Upgrades

	Part No.	Price
CDL3 Club Dash Logger Backlit (Non Logging)	18022	1299.00
CDL3 Logging Enable (enables 8MB logging memory)	29518	433.00
CDL3 12 I/O Upgrade	29500	299.00

#### CDL3 Track Display and Track Logging Kits

The CDL3 Track Display Kit is a cost-effective, plug-in display solution that offers professional level features without the need for a custom installation. The kit is quick and easy to connect, requiring no previous experience with MoTeC systems. Each component simply plugs into the professionally wired and terminated loom, which is labelled to identify the corresponding connector.



**Track Display Kit Includes:** CDL3 with 8MB logging, SLM-C Club Shift Light Module, 10hz GPS (Low Cost), Two buttons, pre-wired, Professional quality plug-in loom, terminated and labelled, with plug-in power adaptor & Ethernet Cable (as per picture above).

**Track Logging Kit Includes :** All the above plus the 8Mb Logging Enable Upgrade.

CDL3 Track Display Kit	18023	1599.00
CDL3 Track Logging Kit	18024	1995.00

#### Spares & Accessories

	Part No.	Price
CDL3 Accessory Kit (includes SLM-C, GPS, CDL3 terminated loom, two button loom and RJ45 Ethernet Cable)	61124	349.00
CDL3 to I/O Loom	61196	220.00
CDL3 to OBD-II	61197	76.00
CDL3 to CAN ECU	61198	65.00
CDL3 to RS232 ECU	61199	61.00
CDL3 Two Button Loom	61221	86.00
CDL3 Curly Cord	61222	134.00
CDL3 Loom, Terminated	62203	213.00
SLM-C Club SLM	18122	225.00





MoTeC Power Distribution Modules (PDM) are designed to replace conventional relays, fuses and circuit breakers, simplifying wiring and reducing weight while increasing reliability. They not only provide electronically switched power to various systems in the vehicle, but can also provide full diagnostic information, including output currents and error status, enabling teams to monitor the entire vehicle via telemetry. New for 2009 are the PDM15 and PDM30 low cost variants.

Power Distribution Modules	Part No.	Price
PDM16 Power Distribution Module	14102	1684.00
PDM32 Power Distribution Module	14100	2666.00
PDM15 Power Distribution Module	14104	1045.00
PDM30 Power Distribution Module	14103	1874.00

PDM Connectors	Part No.	Price
PDM15/30 Input/Output		
PDM15/30 Connector Kit	95560	39.00
PDM16/32 Input/Output		
PDM16/32 8-way Connector (AS616-08SN)	68088	96.00
PDM16/32 26-way Connector (AS616-26SN)	68086	86.00
PDM32 37-way Connector (AS614-35SN)	68100	78.00

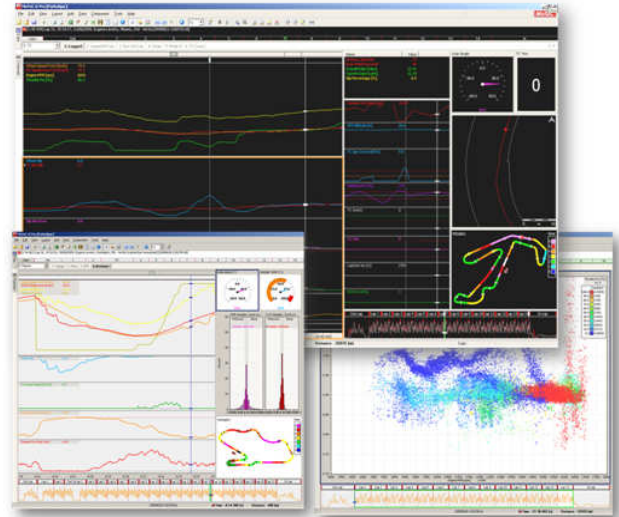
**PDM16/32 Battery+ Connector (ASHD614-1SN-C25)**

*We can supply the PDM Battery+ connector pre-crimped onto a 1m length of 25mm battery cable with either a straight boot, or two options of 90° boot depending on required cable orientation*

PDM Batt+ Connector, 1m cable, straight boot	68062	163.00
PDM Batt+ Connector, 1m cable, 90° boot "Left" orientation	68063	163.00
PDM Batt+ Connector, 1m cable, 90° boot "Right" orientation	68064	163.00

**PDM15/30 Battery Cable**

PDM15/30 1m Battery Cable with pre-crimped terminal	79143	28.00
---	-------	-------



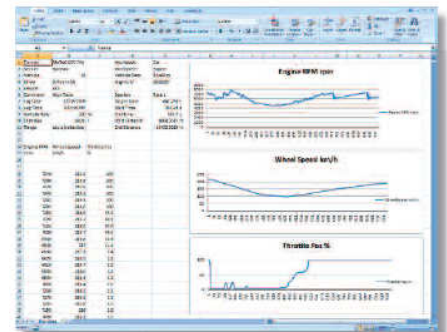
MoTeC's **i2 Pro** Data Analysis software now includes new Feature Licences that can be purchased to activate a particular feature on one physical computer for a nominated length of time. The first features released include Licences to analyse non-**i2 Pro** log files using **i2 Pro** and a Licence to manipulate log files via an API (Application Programming Interface).

**LICENCE TO OPEN MoTeC STANDARD LOG FILES**

- Allows individual PCs to open any MoTeC log file in **i2 Pro**
- Log files can be analysed using all **i2 Pro** features but will be saved in their original format
- Particularly useful for those that use **i2 Pro** software on one computer to analyse **Standard** and/or **Pro** log files from many MoTeC logging devices

**LICENCE TO IMPORT PI ASCII DATASET**

- Allows individual PCs to convert exported Pi ASCII files into **i2 Pro** files, via the **i2 Pro** File Conversion Wizard
- Ideal for MoTeC users who previously had a Pi logging system and would like to analyse this data in **i2 Pro** alongside their current data, or for existing Pi users to take advantage of **i2 Pro**'s extensive analysis features



**i2 API LICENCE**

- Provides access to and manipulation of MoTeC log files from tools such as MS Excel, MATLAB, Visual Basic and Visual C# for custom processing or external analysis of data generated in **i2 Pro**
- Enables the **i2** Application Programming Interface that can be used from any language that supports COM technology
- The functionality of the **i2** API software object includes:
  - Loading any MoTeC log file (.ld file)
  - Reading MoTeC log file data including channels, ranges, laps, beacons and details
  - Creating new **i2 Pro** log files and channels from code

**i2 Activation Codes & Licences**

	Part No.	Price
Open i2 Standard Files ( 1 Year )	22011	510.00
i2 API Licence ( 1 Year )	22021	2510.00
Import Pi ASCII Files ( 30 days )	22030	145.00
Import Pi ASCII Files ( 1 Year )	22031	1075.00



**Race smart.**

## Data Acquisition & Display

**RETAIL**

**JANUARY 2012**

### SDL3 Sport Dash Logger

Part No.

Price

The Sport Dash Logger (SDL3) is an upgraded replacement for the SDL2. New features include:

- Logging memory up to 120 MB
- Fast Ethernet download
- Greater processing power
- Logging of up to 500 samples per second
- Input expansion via E888 Expanders
- 2 more speed inputs than SDL
- Two separate CAN buses
- Internal 3-axis G sensor



**Mating connector not included**

### SDL3 Advanced Dash Logger

The SDL3 comes standard as a combined display and powerful control device in one lightweight unit. With the addition of the Data Logging upgrade it can become a fully programmable data logger with a 16 or 120 MB memory. The optional backlit version has an inbuilt voltage inverter to power the LCD backlight. The ESDL3 Enclosed Dash Logger is supplied to the same base specification as the SDL3 providing 16 or 120 MB logging and control where a display is not required.

SDL3 Advanced Dash Logger	18017	1655.00
Backlit SDL3 Advanced Dash Logger	18018	1875.00
ESDL3 Enclosed Dash Logger (includes 16MB logging enable)	18019	2540.00
37 Pin Autosport SDL3 Connector (AS614-35SN)	68100	78.00

### SDL3 Upgrades

Logging Enable (enables 16 MB logging memory)	29414	985.00
120 MB Logging Memory (upgrade from 16 MB to 120 MB)	29415	402.00
Pro Logging Advanced Analysis	29420	715.00

### SDL Upgrades

Logging Enable (enables 8MB logging memory)	29214	782.00
Pro Logging Advanced Analysis	29220	505.00

### ADL2 Upgrades

16MByte Logging Memory (upgrade from 8MB to 16MB)	29115	200.00
Extension to 50 Input/Outputs	29101	585.00
Pro Logging Advanced Analysis	29120	655.00
Telemetry Support	29121	655.00
Remote Logging (requires telemetry upgrade)	29122	725.00
Lambda Measurement Support	29102	275.00



**www.motec.com**





**Race smart.**

## Data Acquisition & Display

**RETAIL**

**JANUARY 2012**

### ADL3 Advanced Dash Logger

Part No.

Price

The Advanced Dash Logger (ADL3) is a powerful replacement for the ADL2. New features include:

- Logging memory up to 250MB
- Fast Ethernet download
- Logging of up to 1000 samples per second
- Input expansion via E8xx Expanders or VIMs
- 2 more AV inputs than ADL2
- Two separate CAN buses
- Internal 3-axis G sensor
- 



**Mating connector not included**

### ADL3 Advanced Dash Logger

The ADL3 is supplied as a standard dash logger with 16MB logging memory. The optional backlit version has an inbuilt voltage inverter to power the LCD backlight. The EDL3 Enclosed Dash Logger is supplied to the same base specification as the ADL3 providing 16MB logging and control where an integral display is not required



### ADL3 Advanced Dash Logger

18014

3950.00

### Backlit ADL3 Advanced Dash Logger

18015

4321.00

### EDL3 Enclosed Dash Logger

18016

3881.00

### 79 Pin Autosport ADL3 Connector (AS620-35SN)

68080

105.00

### ADL3 Upgrades

#### 250MByte Logging Memory (upgrade from 16MB to 250MB)

29315

525.00

#### Extension to 52 Input/Outputs

29301

635.00

#### Pro Logging Advanced Analysis

29320

735.00

#### Telemetry Support

29321

655.00

#### Remote Logging (requires telemetry upgrade)

29322

725.00

### Central Logging System

Part No.

Price

The MoTeC Central Logging System has been developed as the ultimate acquisition tool for those that place high demands on their data system. This system consists of an ACL (Advanced Central Logger) plus multiple VIMs (Versatile Input Modules). **Mating Connectors not included**

### ACL Advanced Central Logger

#### ACL Advanced Central Logger (inc. 1GB card, pro analysis, and Ethernet comms lead)

18105

4200.00

#### 22 Pin Autosport ACL Connector (AS612-35SN)

68087

65.00

### ACL Upgrades

#### Telemetry Support

25021

706.00

#### Remote Logging (requires telemetry upgrade)

25022

783.00

### SVIM Versatile Input Module

#### SVIM Versatile Input Module

18111

1835.00

#### 5 Pin Autosport VIM CAN/Power Connector (ASL606-05SN)

68098

29.00

#### 55 Pin Autosport VIM Sensor Connector (AS616-35SN)

68090

81.00



**www.motec.com**





**Race smart.**



## Data Acquisition & Display

**RETAIL**

**JANUARY 2012**

### MDD Mini Digital Display

**Part No.**

**Price**

The MDD is a remote LCD Display for use as a satellite display for all ECUs or loggers. The unit is also available as an uncased OEM unit to allow integration into your own design of steering wheel. The MDD Input Kit is available as an add-on to the standard MDD and includes an extra loom to allow buttons and switches to be wired directly to the MDD for transmission via the CAN bus.

**MDD Mini Digital Display**

**18011**

**855.00**

**MDD OEM (uncased MDD for steering wheel integration)**

**18012**

**795.00**

**MDD Input Kit (loom and new backplate. MDD not included)**

**61115**

**150.00**

### MDD Steering Wheel

The MDD is also available integrated into a steering wheel assembly, complete with buttons and shift lights. The wheel has been used in a variety of single seater and sportscar applications, including numerous Le Mans cars and an IndyCar. The wheel is also available with an integrated SLM Shift Light Module. Please contact us to discuss your requirements. (Please Note: Units are made to order)

**MDD Steering Wheel**

**79400**

**from  
2995.00**

### Lap Timing

**Part No.**

**Price**

**MoTeC BTX Beacon Transmitter**

**15500**

**370.00**

**MoTeC BR2 Beacon Receiver**

**15512**

**350.00**

### Beacon Accessories

**5 Pin Autosport BR2 Connector (ASL606-05SN)**

**68098**

**29.00**

**BR2 Configuration Loom (for programming advanced features)**

**61048**

**120.00**

**Replacement BTX Power Lead**

**61033**

**40.00**

### Expansion Modules

**Part No.**

**Price**

These CAN-based Expansion modules provide extra inputs and outputs when connected to a logger or ECU. The E888 features 8 AV inputs and 8 thermocouple inputs with inbuilt amplifiers, whereas the E816 has 16 AV inputs. Both feature extra digital inputs, and 8 outputs.

**E888 Expander Module (supplied with plastic connectors)**

**14007**

**767.00**

**E816 Expander Module (connector not supplied)**

**14008**

**842.00**

**66 Pin Autosport E816 Connector (AS618-35SN)**

**68089**

**101.00**

### Accessories

**Part No.**

**Price**

### STC Serial to CAN Converter

Provides conversion of serial data to CAN format, allowing serial devices to be connected to an SDL/ADL2/ADL3/ACL via the CAN bus. Baud Rate settings should be confirmed at time of order

**STC Serial to CAN Converter**

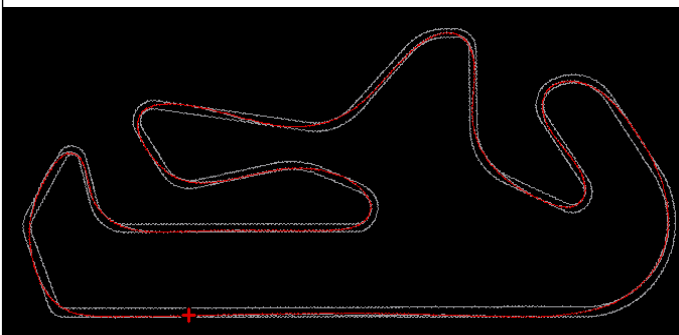
**61125**

**175.00**

**www.motec.com**

**GPS Units**
**Part No.**
**Price**

GPS Units allow vehicle position, speed, and heading data to be sent to a MoTeC logging device, which can then be used for the drawing of track maps and analysis of driving lines in the i2 analysis software. GPS units can also be used for Lap Timing instead of an infrared beacon, when used in conjunction with an CDL3, SDL, SDL3, ADL2, ADL3, or ACL.


**5Hz / 10Hz GPS**

The GPS-L5 and L10 are 5 & 10 Hz GPS units which combines the electronics and antenna into one small unit. A highly sensitive receiver allows the GPS to lock onto signals even in difficult environments. Units come pre terminated with a DTM connector.

The L5 is pre-configured to be compatible with MoTeC 'Hundred Series' and M84 ECUs.

The L10 is pre-configured to be compatible with MoTeC Dash/Data Loggers. It is not compatible with MoTeC ECUs



**GPS-L5 5Hz GPS (ECU)**

**79325**

**195.00**

**GPS-L10 10Hz GPS (Data)**

**79324**

**195.00**

**5Hz GPS GARMIN**

**5Hz GPS-G1 GPS Unit**

**41300**

**320.00**

**Professional 10Hz / 20Hz GPS**

The Professional GPS unit consists of a base unit in a professional aluminium case with Autosport connector, and a separate antenna. The units are available with update rates of 10Hz or 20Hz, and can be specified to transmit GPS data either via RS232 or via CAN through an external MoTeC STC part no 61125. **Baud rate should be confirmed at time of ordering. Mating connector not included**



**Pro 10Hz GPS (RS232 comms only)**

**41303**

**640.00**

**Pro 20Hz GPS (RS232 comms only)**

**41304**

**998.00**

**STC Serial to CAN Converter**

**61125**

**175.00**

**Accessories**

**13 Pin Autosport Professional GPS Connector (AS610-35SA)**

**68010**

**59.00**

**Spare GPS Antenna for Professional Unit**

**41305**

**72.00**



**Race smart.**



## Engine Management Systems

**RETAIL**

**JANUARY 2012**

### M4 ECU

**Part No.**

**Price**

*The M4 features four injector drivers, and the M4 Pro has the Advanced Tuning and Data Logging option as standard. Includes mating connector*

**MoTeC M4-3DFIS ECU (3D Fuel/Ignition/Sequential)**

**10002**

**749.00**

**MoTeC M4-PRO 3DFISA ECU (Advanced & Logging)**

**10003**

**999.00**

### M4 ECU Upgrades

**M4 Advanced & Logging Upgrade**

**26004**

**250.00**

**M4 Logging Only Upgrade (512kB)**

**26005**

**170.00**

**M4 Lambda Upgrade (requires advanced & logging upgrade)**

**26006**

**200.00**

**M4 Telemetry Upgrade**

**26008**

**475.00**

**M4 Remote Logging Upgrade (requires telemetry upgrade)**

**26009**

**475.00**

### M48 ECU

**Part No.**

**Price**

*The M48 features eight injector drivers, and the M48 Pro has the Advanced Tuning and Data Logging option as standard. Includes mating connector*

**MoTeC M48-3DFIS ECU (3D Fuel/Ignition/Sequential)**

**11002**

**1100.00**

**MoTeC M48-PRO 3DFISA ECU (Advanced & Logging)**

**11003**

**1363.00**

### M48 ECU Upgrades

**M48 Advanced & Logging Upgrade**

**27004**

**263.00**

**M48 Logging Only Upgrade (512kB)**

**27005**

**178.00**

**M48 Lambda Upgrade (requires advanced & logging upgrade)**

**27006**

**210.00**

**M48 Telemetry Upgrade**

**27008**

**499.00**

**M48 Remote Logging Upgrade (requires telemetry upgrade)**

**27009**

**499.00**

### MLS & M2R ECUs

**Part No.**

**Price**

*The MLS and M2R ECUs are derived from the M4 ECU, and are customised for more specific applications. Includes mating connector*

**MLS ECU (for Chevrolet LS1 and Lexus 1UZFE V8 Engines)**

**10005**

**840.00**

**M2R ECU (dedicated to 2 rotor engines)**

**10006**

**840.00**

### MLS ECU Upgrades

**MLS Advanced & Logging**

**26014**

**278.00**

**MLS Logging Only Upgrade (512kB)**

**26015**

**178.00**

**MLS Lambda Upgrade (requires advanced & logging upgrade)**

**26016**

**210.00**

### M2R ECU Upgrades

**M2R Advanced & Logging**

**26024**

**278.00**

**M2R Logging Only Upgrade (512kB)**

**26025**

**178.00**

**M2R Lambda Upgrade (requires advanced & logging upgrade)**

**26026**

**210.00**

**www.motec.com**



## M84 ECU

**Part No.**

**Price**

The NEW versatile MoTeC M84 ECU delivers a unique package of professional level features at an entry-level price. The M84 is suitable for a broad range of high performance engine applications, including engines with up to 8 cylinders. It also suits rotary engines with twin, triple or quad rotors.

Based on the same advanced technology pedigree as MoTeC's world-renowned benchmark M800 ECU. The M84 ECU shares the same sophisticated processor and Windows software platform but with a package of features to suit more moderate system requirements.

**The entry-level price includes permanently enabled on-board Wideband Lambda Plus 512kB of data logging memory as standard.**



## M84 Features

- Shares the same advanced technology pedigree as the M800/M880 ECU
- Programmable, sequential control of engines up to 8 cylinders and quad rotaries
- Individual dual cylinder tuning of both fuel delivery and ignition timing
- Suits modern engines, including those with coil per cylinder ignition
- Accommodates almost all OEM sensors and factory trigger modes
- Integrated advanced diagnostics, including injector and crank trigger modes
- 8 Auxiliary outputs for user-defined functions such as boost control and spray bars
- Dedicated, Windows based ECU Manager software with sophisticated diagnosis and user definable screen layouts
- World class data analysis using MoTeC's i2 software
- Easy CAN connectivity to other MoTeC devices such as Dash & Shift Light Modules

## M84 ECU

**Part No.**

**Price**

**M84 ECU**

**13084**

**1475.00**

## M84 ECU Upgrades

**Part No.**

**Price**

**Advanced Functions (includes Hi-Lo, Traction, ORB, Gear cut)**

**27104**

**290.00**

**Hi-Lo Injection (secondary Injection)**

**27101**

**175.00**

**Traction Control & Launch Control (2 ,3 or 4 wheel)**

**27102**

**185.00**

**Dual Lambda**

**27103**

**165.00**

**Over Run Boost (anti-lag)**

**27117**

**179.00**

**Gear Change Ignition Cut (flat shifts)**

**27118**

**179.00**

**M400 ECU**
**Part No.**
**Price**

The M400 offers four injector drivers and four ignition outputs, and is a fully programmable management system ideal for engines up to four cylinders with sequential injection and multi-coil ignition. It is also well suited to twin rotary applications. Eight auxiliary outputs provide control for aftermarket devices and systems providing functions such as 3D boost control, nitrous injection, intercooler spray bars, idle speed, shift lights, warning alarms and many more. **Includes mating connectors**


**M400 ECU**
**13040**
**1717.00**
**M400 ECU Upgrades**

**M400 Advanced Functions Upgrade (allows anti-lag, traction and launch control, full throttle upshift, pit speed limiting, etc)**

**24105**
**295.00**

**M400 Logging Only Upgrade (512kB)**

**24101**
**121.00**

**M400 Lambda Upgrade**

**24102**
**394.00**

**M400 Drive by Wire (contact us for supported applications)**

**24112**
**262.00**

**M400 Camshaft Control (contact us for supported applications)**

**24116**
**236.00**

**M400 Over Run Boost**

**24117**
**179.00**

**M400 Pro Analysis**

**24104**
**557.00**
**M600 ECU**
**Part No.**
**Price**

The M600 offers six injector drivers and six ignition outputs, and is a fully programmable management system ideal for engines up to six cylinders with sequential injection and multi-coil ignition. It is also well suited to triple rotary applications. Eight auxiliary outputs provide control for aftermarket devices and systems providing functions such as 3D boost control, nitrous injection, intercooler spray bars, idle speed, shift lights, warning alarms and many more. **Includes mating connectors**


**M600 ECU**
**13060**
**1885.00**
**M600 ECU Upgrades**

**M600 Advanced Functions Upgrade (allows anti-lag, traction and launch control, full throttle upshift, pit speed limiting, etc)**

**26105**
**295.00**

**M600 Logging Only Upgrade (512kB)**

**26101**
**121.00**

**M600 Lambda Upgrade**

**26102**
**394.00**

**M600 Dual Lambda Upgrade (requires single lambda upgrade)**

**26103**
**189.00**

**M600 Drive by Wire (contact us for supported applications)**

**26112**
**262.00**

**M600 Camshaft Control (contact us for supported applications)**

**26116**
**236.00**

**M600 Over Run Boost**

**26117**
**179.00**

**M600 Pro Analysis**

**26104**
**557.00**

**M800 & M880 ECUs**
**Part No.**
**Price**

The **M800** offers eight injector drivers (with twelve as an option) and six ignition outputs, and is a fully programmable management system ideal for engines up to twelve cylinders with sequential injection and multi-coil ignition. **Includes mating connectors**



The **M880** has the same facilities as the M800 but includes the Advanced Functions Upgrade, Single Lambda, 1MB Logging Memory, Autosport Connector & option to expand to 4MB logging memory. **Mating connector not included**

**M800 ECU Standard Tuning**
**13001**
**2095.00**
**M880 Professional**
**13002**
**3472.00**
**66 Pin Autosport M880 Connector (AS618-35SN)**
**68089**
**101.00**
**M800 & M880 ECU Upgrades**
**Part No.**
**Price**
**M800 Advanced Functions Upgrade (allows anti-lag, traction and launch control, full throttle upshift, pit speed limiting, etc)**
**28105**
**295.00**
**1Mb Logging Memory (M800 only)**
**28101**
**179.00**
**4Mb Logging Memory (M880 only)**
**28108**
**404.00**
**Pro Logging Advanced Analysis**
**28104**
**557.00**
**Single Lambda Support**
**28102**
**394.00**
**Dual Lambda Support (requires single lambda upgrade)**
**28103**
**189.00**
**Telemetry Support**
**28107**
**520.00**
**Remote Logging Upgrade (requires telemetry upgrade)**
**28109**
**520.00**
**10/12 Cylinder Sequential Support**
**28111**
**289.00**
**Drive by Wire (contact us for supported applications)**
**28112**
**262.00**
**Multi-Pulse Injection and Multi-Spark Ignition**
**28115**
**168.00**
**Servo Motor & Stepper Motor Drive**
**28113**
**168.00**
**Camshaft Control (contact us for supported applications)**
**28116**
**236.00**
**M800 Over Run Boost**
**28117**
**179.00**





**Race smart.**

## OEM Plug-In ECU Systems

**RETAIL**

**JANUARY 2012**

The **M800 OEM** is designed as a Plug-In ECU for Mitsubishi and Subaru applications and is based on the M800 ECU. The Plug-In ECU is designed to use the vehicle's existing wiring, with no need to remove or add sensors. Customised with OEM connectors, these replacement boards eliminate the need for adaptor looms, and fit straight into the factory ECU box. The M800 OEM has all the facilities of the M800 except it can only drive low current type Fuel Injectors.



The **Diff Controllers** offers direct replacements for Mitsubishi and Subaru driver-controlled centre differentials, allowing a number of user-defined configurations to determine the operating characteristics of the centre differential. **Now included** the MDC2 Diff Controller for the Mitsubishi EVO X RS & GSR.

### Included ECU codes and Lower Prices

MoTeC now includes selected Upgrade Codes Free of Charge for each OEM type, within the current ECU price.

Additionally we have lowered the total price of the Mitsubishi EVO X and the Subaru 9/10 ECUs. The part numbers will remain the same and the parts listing below explains which codes are now included with each OEM ECU type and the end total price.

Mitsubishi	Part No.	Price
<b>M800 OEM Plug-In ECUs</b>		
<i>NOTE: EVO 9 versions require the addition of part 28116 cam control upgrade</i>		
Mitsubishi EVO 4-8 (4 plug) <i>Adv. Functions &amp; 1Mb logging incl</i>	13009A	1650.00
Mitsubishi EVO 8/9 (3 plug, EVO 8 MR/GSR & EVO 9) <i>Adv. Functions &amp; 1Mb logging included</i>	13010A	1650.00
Mitsubishi EVO 9 cam control upgrade	28116	236.00
Mitsubishi EVO X RS-GSR <i>Cam, DBW and Adv. Functions incl.</i>	13014A	1995.00
<i>NOTE: It is essential to specify at time of ordering if you require an RS or GSR version</i>		

<b>Diff Controllers</b>		
MDC Mitsubishi Diff Controller (EVO 7,8 and 9)	14012	898.00
MDC2 Mitsubishi Diff Controller (EVO X RS-GSR)	14016	898.00

Subaru	Part No.	Price
<b>M800 OEM Plug-In ECUs</b>		
<i>NOTE: Subaru STi versions require the addition of part 28116 cam control upgrade</i>		
Subaru Version 5-6 <i>Adv. Functions &amp; 1Mb logging included</i>	13004A	1650.00
Subaru Version 7/8 (WRX, UK/Jap/USA versions) <i>Adv. Functions &amp; 1Mb logging included</i>	13008A	1650.00
Subaru Version 9/10 <i>Cam, DBW and Adv. Functions included</i>	13012A	1995.00
Subaru STi Cam Control Upgrade	28116	236.00
<b>Diff Controllers</b>		
MoTeC SDC1 Subaru Diff Controller (WRX STi 2003)	14009	898.00
MoTeC SDC2 Subaru Diff Controller (2004/5/6 models)	14010	898.00
MoTeC SDC3 Subaru Diff Controller (2008 models)	14015	898.00



**Lower Price!**



**Lower Price!**

**www.motec.com**



**Race smart.**



YAMAHA



KAWASAKI



SEA-DOO



HYDROSPACE



## PWC Plug-In ECU Kits

**RETAIL**

**JANUARY 2012**

MoTeC PWC Plug-In ECU kits are fully programmable, direct replacements for factory ECUs on a select number of popular PWC models, based around the M400M Marine ECU. The system can be purchased as a kit complete with an adaptor wiring loom, mounting brackets and DBW upgrade where required. PWC Plug-In kits are convenient and cost effective to install because they eliminate the need to rewire the PWC. They simply plug into the factory wiring harness using the original sensors and fuel system. Alternatively the parts can be bought individually.



PWC Models	Part No.	Price
M400 PWC Kit for YAMAHA FX-SHO, FZS/FZR	13041	1995.00
M400 PWC Kit for KAWASAKI ULTRA 250X, 260X	13042	1995.00
M400 PWC Kit for SEA-DOO RXP, RXP-X, RXT	13043	1995.00
M400 PWC Kit for HYDROSPACE S4	13044	1995.00
M400 PWC Kit for SEA-DOO 2010 RXT-X-260, 260iS	13045	2257.00
<b>Accessories</b>		
Wiring Adaptor Kit for Yamaha FX-SHO, FZS/FZR	61143	560.00
Wiring Adaptor Kit for Kawasaki Ultra 250X, 260X	61151	923.00
Wiring Adaptor Kit for SEA-DOO RXP, RXP-X, RXT	61157	960.00
Wiring Adaptor Kit for HYDROSPACE S4	61160	745.00
Wiring Adaptor Kit for SEA-DOO 2010 RXT-X-260, 260iS	61170	980.00
Wiring Loom only for Yamaha FX-SHO, FZS/FZR	61142	400.00
Wiring Loom only for Kawasaki Ultra 250X, 260X	61144	370.00
Wiring Loom only for SEA-DOO RXP, RXP-X, RXT	61155	450.00
Wiring Loom only for HYDROSPACE S4	61166	450.00
Wiring Loom only for SEA-DOO 2010 RXT-X-260, 260iS	61171	535.00
Marine M400 ECU	13040M	1680.00
Yamaha Injector YP 725cc	34016	135.00
Yamaha Injector Connector Kit Uscar	34017	11.00
Yamaha Adaptor Top 11mm for YP Injector	34018	16.00

Hayabusa Kit	Part No.	Price
<p>MoTeC offer a choice of two working Plug-and-Play ECU and wiring kits as direct replacements for the factory ECU on Suzuki Hayabusa models Gen I and Gen II, based around the M84 and M800 ECUs.</p> <p>The PNP kit includes the adapter box, wiring harness, lambda sensor, Bosch ignition amplifier, custom ECU mount with hardware and either a MoTeC M84 or M800 ECU depending on type.</p>		
Hayabusa PNP Kit - M84 ECU version	13084-Hayabusa	2100.00
Hayabusa PNP Kit - M800 ECU version	13001-Hayabusa	2720.00
Wiring loom Adaptor Kit Only - (without ECU)	79170	695.00

**www.motec.com**



Race smart.



## ECU Accessories

RETAIL

JANUARY 2012

### ECU Accessories

Part No.

Price

*ECU Accessories include a mating connector unless otherwise stated*

Ignition Expander	14001	268.00
AS Connector Ignition Expander (needs connector 68087)	14006	373.00
Traction Control Multiplexer	14002	268.00
AS Connector TC Multiplexer (needs connector 68087)	14005	373.00
Pierburg Boost Control Valve (includes connector)	58004	121.00
3 Port Boost Control Valve	58020	94.00
M4/M48 SUU Software Update Unit	63008	107.00

### ECU Accessory Connectors

22 Pin Autosport IEX/TCMux Connector (AS612-35SN)	68087	65.00
---	-------	-------

### DBW-4 Drive By Wire Module

Part No.

Price

*The DBW-4 works with M400/M600/M800/M880 ECUs running firmware V3.30T and later, and provides 4 PID Controllers for drive by wire control, or generic PID control for servo motors. The use of a DBW-4 does not require a DBW upgrade in your ECU. **Mating connector not included***

MoTeC DBW-4	14011	815.00
66 Pin Autosport DBW-4 Connector (AS618-35SN)	68089	101.00

### Knock Monitoring and Control

Part No.

Price

*Knock Modules work with vehicle knock sensors to provide individual cylinder closed loop knock control, allowing tuners to safely optimise high performance ignition maps. There is a standalone module and a version specifically designed to mount onto an M800 Plug-In ECU. A competent tuner needs to carry out a frequency analysis to determine the target frequency and knock module settings. This is highly specialised work.*

**MoTeC Knock Modules will only be available through authorised dealers that have undertaken specific training**

OKM Onboard Knock Module (for M800 P&P ECUs)	53115	556.00
Mitsubishi EVO X OKM Onboard Knock Module	53121	556.00
SKM Standalone Knock Module	53116	796.00
Knock Sensor Loom (for use with SKM)	61114	252.00

### DHB Dual Half Bridge

Part No.

Price

*The DHB is a high current amplifier which allows low current auxiliary outputs to drive high current loads such as motors. It contains two high current half bridge outputs, and connects to any auxiliary output of a MoTeC ECU or Dash Logger, which performs the control function, such as PWM speed control, direction control or servo control. **Mating connectors not included***

DHB Dual Half Bridge (needs connectors 68050, 79121, and 79125 — see page 24)	41213	295.00
---	-------	--------

[www.motec.com](http://www.motec.com)





**Race smart.**

## Lambda Measurement

**RETAIL**

**JANUARY 2012**

### LTC Lambda To CAN Module

**Part No.**

**Price**

MoTeC's LTC (Lambda to CAN) modules monitor, control and diagnose Bosch LSU 4.9 Lambda sensors, transmitting readings on a CAN bus. When multiple LTCs are used, up to 32 Lambda sensors can be configured on a single CAN bus, allowing a CAN-enabled ECU or logging device to simultaneously monitor numerous Lambda sensors. The LTC is also available as a dual version LTCD to work with two sensors into one module. Sensor sold separately.



**LTC Lambda to CAN Module**

**61300**

**418.00**

**LTCD Dual Lambda to CAN Module**

**61301**

**609.00**

### LTC-NTK

**Part No.**

**Price**

MoTeC's LTC NTK (Lambda To CAN) module monitors, controls and diagnoses an NTK Lambda sensor, and transmits Lambda readings on a CAN bus. When using LTC NTKs, up to 32 Lambda sensors can be configured on a single CAN bus allowing an ECU or logging device to simultaneously monitor multiple Lambda sensors. Compatible with NTK UEGO sensors. Sensor sold separately.



**LTC-NTK**

**61304**

**418.00**

**LTC-NTKD**

**61305**

**609.00**

### PLM Professional Lambda Meter

**Part No.**

**Price**

**PLM Professional Lambda Meter with LSU Sensor and Loom**

**15003**

**995.00**

**PLM Professional Lambda Meter with NTK Sensor and Loom**

**15002**

**1322.00**

**PLM Professional Lambda Meter with LSU 4.9 Sensor & Loom**

**15005**

**1350.00**

**PLM Professional Lambda Meter only**

**15004**

**895.00**

**Standard 2.6m PLM Loom (available individually as a spare)**

**61038**

**103.00**

**10m Bosch PLM Extension Loom**

**61045**

**350.00**

**PLM NTK Adaptor Loom**

**61105**

**57.00**

**PLM Bosch LSU 4.9 Adaptor Loom**

**61118**

**65.00**

### Lambda Sensors & Accessories

**Part No.**

**Price**

**Bosch Wide Band Lambda Sensor (LS11 for M4/M48/M8)**

**57001**

**171.00**

**Bosch LSU 4.0 Lambda Sensor (for M800 series and PLM)**

**57003**

**113.00**

**Bosch LSU 4.9 Lambda Sensor (for M800 series, PLM, LTC)**

**57006**

**143.00**

**NTK Lambda Sensor (for M800 series and PLM)**

**57007**

**225.00**

**Stainless Steel Weld-on Boss Including Bung**

**59002**

**21.00**

**Bosch LSU 4.0 Connector**

**64006**

**19.00**

**Bosch LSU 4.9 Connector**

**64010**

**16.00**

**M800 OEM Lambda Adaptor (300mm from OEM to DTM plug)**

**61044**

**40.00**

**M800 OEM LSU 4.0 Adaptor (3m from DTM to LSU 4.0 plug)**

**61050**

**44.00**

**M800 OEM LSU 4.9 Adaptor (2m from DTM to LSU 4.9 plug)**

**61051**

**44.00**

**www.motec.com**



Race smart.

## Ignition System Components

RETAIL

JANUARY 2012

### CDI Capacitive Discharge Ignition

Part No.

Price

The **CDI/4** can be used as an ignition driver from an ECU to drive up to 4 individual high energy CDI coils. **Mating connector included**

The **CDI/8** can be used as an ignition driver from an ECU to drive up to 8 individual high energy CDI coils or can be used with external sensors as a stand-alone system. As a stand-alone unit it can be programmed from a PC running on its own dedicated sensors. **Mating connector not included**



MoTeC CDI/4 (for use with an ECU)

41003

746.00

MoTeC CDI/8

14004

1367.00

26 Pin Autosport CDI/8 Connector (AS616-26SN)

68086

89.00

1000Hz Single Channel CDI Module (for use with an ECU)

41013

370.00

650Hz Dual Channel CDI Module (for use with an ECU)

41005

527.00

### Ignition Coils & Amplifiers

Part No.

Price

#### Ignition Coils

Single Coil

42001

40.00

Denso Single Coil (built-in amplifier, includes connector)

42012

98.00

Bosch Single Coil

42014

45.00

Bosch 4 Cylinder Coil Pack (wasted spark)

42025

105.00

CDI Coil (PS92)

42020

134.00

CDI Coil (wasted spark)

42021

50.00

Bosch 6 Cylinder Coil Pack (wasted spark)

42022

63.00

Single Mercury CDI Coil

42011

76.00

Single CDI Coil

42030

131.00

Bosch HT Coil Connections

46001

3.00

Bosch HT Coil Covers

46002

3.00

#### Ignition Amplifiers

IGN4 - Compact Quad Channel Ignition Amplifier  
(Please contact us before ordering)

41212

225.00

Single Channel Ignition Amplifier

41124

103.00

Single Channel Ignition Amplifier (with tacho. output)

41008

120.00

Dual Channel Ignition Amplifier

41200

134.00

Triple Channel Ignition Amplifier

41203

158.00

Triple Channel Ignition Amplifier (dual connector)

41205

170.00

Quad Channel Ignition Amplifier (dual connector)

41204

225.00

Ignition Combiner (provides a tacho output — refer to MoTeC drawing A10)

53110

70.00



www.motec.com



**Race smart.**



## Communications Cables

**RETAIL**

**JANUARY 2012**

### CAN Communications

**Part No.**

**Price**

*CAN is used for laptop communications with M400/M600/M800/M880, SDC1/SDC2/MDC, old-style ADL8, BR2, and the new PDM16 and PDM32. The CAN cable connects to a PC parallel port, whereas the UTC allows CAN communication via a USB port.*

UTC USB to CAN Converter	61059	160.00
CAN Communications Cable	61021	150.00
CAN Cable and UTC Loom Connector ( <i>in line</i> )	65038	11.00
CAN Cable and UTC Loom Connector ( <i>panel mount</i> )	65030	12.00
CAR Cable ( <i>vehicle loom CAN interface</i> )	61022	57.00
M800 OEM CAN Adaptor ( <i>also for SDC1/SDC2</i> )	61046	36.00

### USB Communications

**Part No.**

**Price**

*USB is used for laptop communications with the SDL and ADL2/EDL2.*

USB Cable Terminated in Autosport Sockets ( <i>1m</i> )	61067	29.00
USB Cable Terminated in Autosport Sockets ( <i>1.8m</i> )	61068	32.00
2m USB Cable	79140	10.00
USB Bulkhead Connector and Cap	90100	16.00

### Ethernet Communications

**Part No.**

**Price**

*Ethernet is used for laptop communications with ADL3, EDL3, SDL3, ESDL3 and ACL. We now supply a Bulkhead Ethernet cable terminated with Autosport sockets..*

ACL Ethernet Communications Cable	61112	128.00
Ethernet RJ45 Bulkhead to Autosport Sockets <i>1.8M</i> <i>NOTE: You will also need a standard RJ45 cable to work with this product</i>	61132	46.00



### Serial Communications

**Part No.**

**Price**

*A serial connection is used for laptop communications with M4, M48, M8 ECUs, and the PLM,*

2m PCI Cable ( <i>M48, M8 and early M4</i> )	63003	105.00
6m PCI Cable ( <i>M48, M8 and early M4</i> )	63004	120.00
RS232 Comms Cable ( <i>M4e and PLM</i> )	61070	11.00
CIM Kit ( <i>ECU to SDL/ADL/ADL2 Interface for M4, M48, M8</i> )	61027	168.00
D9 Adaptor ( <i>for use with PCI cable on M4 &lt;3000, M48, M8</i> )	61010	34.00
D9 – 232 Adaptor ( <i>M4 only</i> )	61016	27.00
D9 Adaptor ( <i>Mitsubishi/Subaru for M48 OEM conversion</i> )	61012/3	40.00
D9 Mil Spec Adaptor ( <i>for mil spec M4, M48, and M8 ECU</i> )	61011	115.00
USB to Serial Adaptor	90099	45.00

**www.motec.com**



## Speed Sensors

**Part No.**
**Price**

Speed sensors are used to measure cam and crank position, or wheel speed. Hall Effect sensors provide an open collector output, suitable for REF/SYNC and digital inputs on ECUs, and digital or speed inputs on Dash Loggers. Inductive sensors output a voltage waveform due to a changing magnetic field, and are suitable for use on REF/SYNC inputs on ECUs, and speed inputs on Dash Loggers.

## Hall Effect Sensors

GT101 (19mm plastic body)	57101	61.00
Miniature Vane Sensor (plastic body)	57109	62.00
Threaded Hall Probe (M12x1, 36mm stainless steel body)	57111	82.00
Inductive Probe (7/16 x 20tpi threaded steel body) Requires Magnet below PN 57115	57114	103.00
Magnet for Sensor 57114	57115	21.00

## Inductive Sensors

Magneti Marelli SEN 8D Sensor	57104	57.00
-------------------------------	-------	-------

## Magnetic to Hall Speed Sensor Conversion

The DMC-D converts signals from two magnetic speed sensors into 'Hall Effect' signals, suitable for digital inputs. The DMC-D is housed in a 12-way DTM male connector, so requires a 12-way DTM female connector (not supplied) for a wiring loom interface.

DMC-D Dual Magnetic Converter	53118	58.00
12 Way Female DTM Connector Kit for DMC-D	68060	14.00

## Pitot Tubes

**Part No.**
**Price**

Pitot Tubes are used for air speed measurement, which gives a reference speed when analysing aerodynamic performance data. The assembly supplied by MoTeC Europe includes a pitot tube and attached differential pressure sensor. The sensor is calibrated and logged as a pressure difference, which is then converted into an air speed value in i2 Pro using a maths function.

**Note: lead time on Pitot Tubes is normally 3-4 weeks from time of order**

130mm Pitot Tube Assembly	25mbar (up to ~230km/h)	53204	550.00
	50mbar (up to ~330km/h)	53205	550.00
	70mbar (up to ~390km/h)	53206	550.00
300mm Pitot Tube Assembly	25mbar (up to ~230km/h)	53207	650.00
	50mbar (up to ~330km/h)	53208	650.00
	70mbar (up to ~390km/h)	53209	650.00

<b>Temperature Sensors</b>	<b>Part No.</b>	<b>Price</b>
<b>Variable Resistance</b>		
Delco Air Temperature (3/8 NPT)	54001	60.00
Bosch Air Temperature (M12x1.5)	54002	29.00
Air Temperature with Fly Lead (M10x1)	54003	65.00
Air Temperature with Fly Lead (M12x1.5)	54005	67.00
Bosch -40 to 150°C Fluid Temperature (M12x1.5)	55002	24.00
Bosch -40 to 150°C Fluid Temperature (M10x1)	55003	40.00
-30 to 150°C Fluid Temperature with Fly Lead (M12x1.5)	55005	60.00
-30 to 150°C Fluid Temperature with Fly Lead (M10x1)	55004	58.00
Delco Air Temperature Sensor Connector Kit	64001	10.00
Bosch 2 Pin Female Connector Kit	65008	6.00
<b>Thermocouples</b>		
<i>K type thermocouples are often used to measure exhaust temp. If used with an ECU or Dash Logger, an Amplifier is required. If used with an E888 or VIM, the amplifier is not required.</i>		
MoTeC Thermocouple Amplifier	58008	111.00
K type Thermocouple Kit (150mm probe length)	58005	61.00
K type Thermocouple Kit (75mm probe length)	58009	61.00
1/8NPT Thermocouple Stainless Steel Fitting and Gland Nut	58012	18.00
K type Sensor Female Socket	58017	6.00
K type Sensor Male Plug	65048	7.00
<b>Non-Contact Infra Red</b>		
<i>Infra Red sensors allow non-contact temperature measurement, and are often used for tyre or brake temperature monitoring.</i>		
0 – 150°C Infra Red Sensor (plastic body) (very limited stock)	52003	105.00
0 – 150°C Infra Red Sensor (aluminium body)	52009	179.00
0 – 1200°C Infra Red Sensor (best for carbon brakes)	52005	336.00
0 – 1000°C Infra Red Sensor (best for steel brakes)	52006	336.00
<b>Manifold Pressure Sensors (Absolute)</b>		
<b>Part No. Price</b>		
1bar High Accuracy Delco MAP Sensor (connector supplied)	53000	145.00
1bar Delco MAP Sensor (connector supplied)	53001	78.00
3bar Delco MAP Sensor (connector supplied)	53003	132.00
<i>These 4bar sensors feature a 3/8"UNF (-03) fitting.</i>		
4bar Standard Sensor (integral connector, with mating half)	58060	116.00
4bar Professional Sensor (flylead connection)	58040	147.00

*Need a connector fitted? See page 24 for details of our Sensor Termination Service*

#### Fluid Pressure Sensors (Gauge)

Part No.

Price

*5 and 10 bar sensors are for Fuel and Oil Pressure, with 170 bar sensors used for Brake Pressure*

#### Basic VDO Sensors - 1/8"NPT Fitting

5bar VDO Sensor (screw terminals)

58002

63.00

10bar VDO Sensor (screw terminals)

58003

63.00

#### Standard Sensors - 3/8"NPT (-03) Fitting

10bar Standard Sensor (integral connector, with mating half)

58061

116.00

170bar Standard Sensor (integral connector, with mating half)

58062

116.00

#### Professional Sensors - 3/8"NPT (-03) Fitting

5bar Professional Sensor (flylead connection)

58041

147.00

10bar Professional Sensor (flylead connection)

58042

147.00

100bar Professional Sensor (flylead connection)

58044

147.00

170bar Professional Sensor (flylead connection)

58043

147.00

#### Motion Sensors

Part No.

Price

±4G Single Axis G Sensor (ECU)

57202

234.00

±4G Dual Axis G Sensor (ECU and ADL2)

57210

328.00

±4G Triple Axis G Sensor (ECU)

57203

447.00

±4G Single Axis G Sensor (ADL2)

57205

234.00

±4G Triple Axis G Sensor (ADL2)

57206

447.00

100°/s Single Axis Gyro

79130

530.00

150°/s Single Axis Gyro

79131

530.00

#### Strain Gauges

Part No.

Price

*Gearshift load cells are used for flat shift functions, and we can supply kits for sequential or H-pattern gearboxes providing an amplified 0-5V output. We can also supply amplifiers for existing strain gauges. Note that strain gauge products are made to order so are subject to a lead time.*

Sequential Gearshift Load Cell Kit

95004

604.00

H-Pattern Gearshift Load Cell Kit

95005

604.00

Strain Gauge Amplifier

95007

262.00

Motorcycle Quickshift Loadcell

79104

300.00

#### Rotary Position Sensors

Part No.

Price

*Rotary potentiometers are used for measurement of parameters such as Throttle Position, Steering Angle, and Gear Barrel Position in sequential transmissions.*

Standard D-drive Throttle Position Sensor (right hand, black)

56001

116.00

Standard D-drive Throttle Position Sensor (left hand, white)

56002

116.00

100° Sprung Shaft Potentiometer

59008

116.00

350° Sprung Shaft Potentiometer

59013

116.00

Multi Turn Steering Angle Kit (10 turn pot, 2 gears, and belt)

59006

131.00



**Linear Position Sensors**

**Part No.**

**Price**

*Linear potentiometers are mainly used for measuring damper or suspension movement, but can be used in a variety of other applications, such as throttle pedal position measurement.*

<b>50mm Linear Potentiometer</b>	<b>57152</b>	<b>156.00</b>
<b>75mm Linear Potentiometer</b>	<b>57153</b>	<b>168.00</b>
<b>100mm Linear Potentiometer</b>	<b>57156</b>	<b>179.00</b>
<b>150mm Linear Potentiometer</b>	<b>57155</b>	<b>189.00</b>
<b>200mm Linear Potentiometer</b>	<b>57158</b>	<b>200.00</b>
<b>75mm Slimline Linear Pot (Pop Joint) - Rear Suspension</b>	<b>79160</b>	<b>168.00</b>
<b>150mm Slimline Linear Pot (Pop Joint) - Front Suspension</b>	<b>79161</b>	<b>189.00</b>
<b>Rose Joint End for Slimline Potentiometers</b>	<b>79162</b>	<b>9.00</b>



**Ride Height Sensors**

**Part No.**

**Price**

*Ultrasonic Ride Height Sensors allow detailed analysis on cars featuring significant aerodynamic performance. The sensors are available in a variety of measurement ranges, with two different levels of voltage output, depending on the type of input used on the data acquisition system. These sensors have been successfully used in single-seater and Le Mans Prototype, applications. Sensor supplied fitted with AS connector. Please contact us to discuss your requirements*

<b>0-5V (suitable for hi-res ADL2 AV inputs)</b>	<b>150mm Range</b>	<b>79315</b>	<b>498.00</b>
	<b>200mm Range</b>	<b>79316</b>	<b>498.00</b>
	<b>250mm Range</b>	<b>79317</b>	<b>498.00</b>
<b>0-10V (suitable for normal ADL2 AV inputs)</b>	<b>150mm Range</b>	<b>79318</b>	<b>498.00</b>
	<b>200mm Range</b>	<b>79319</b>	<b>498.00</b>
	<b>250mm Range</b>	<b>79320</b>	<b>498.00</b>

**Sensor Termination Service**

**Part No.**

**Price**

*MoTeC generally supplies sensors with an unterminated fly lead so that you can choose which connector to fit, to match existing loom connectors, or budgetary constraints. However we now offer a termination service, to fit either a DTM or Autosport connector. In each case the sensor fly lead is covered with Raychem DR25 heatshrink, and the connector has a heatshrink boot for added protection. Default specifications are outlined below, however please contact us to specify alternative lead lengths, pinouts, or connector specifications*

**Autosport Connector Fitting**

*Default fitting of 5-pin AS male connector (ASL606-05PN), with lead length of 300mm from sensor body to back face of connector. Alternative AS keyways are available on request.*

Pin 1	Ground
Pin 2	Signal
Pin 3	Power
Pin 4	N/C
Pin 5	N/C



**Autosport Connector Fitting**

**78001**

**75.00**

**DTM Connector Fitting**

*Default fitting of 3-pin DTM male connector (DTM04-3P), with lead length of 300mm from sensor body to back face of connector.*

Pin 1	Ground
Pin 2	Signal
Pin 3	Power



**DTM Connector Fitting**

**78002**

**50.00**





**Race smart.**

## Wiring & Connectors

**RETAIL**

**JANUARY 2012**

### Wiring Looms

**Part No.**

**Price**

#### Adaptor Looms

*If you require an adaptor loom as an interface between any of our M4/M48 or M400/M600/M800 / M880 ecu's and a particular vehicle we have most of the requisite circuit pin out drawings and components in stock.*

*Once we know the details of your vehicle and specific requirements we can recommend a choice of authorised specialist wiring manufactures from within our network who would be able to quote for and supply an adaptor loom to suit your application.*

#### Unterminated Looms

M4 Cut-to-Fit Loom (2.5m unterminated)	61001	150.00
M48 Cut-to-Fit Loom (2.5m unterminated)	61002	150.00
M8 Cut-to-Fit Loom (2.5m unterminated)	61003	150.00
M400, M600, M800 & M84Cut-to-Fit Loom (2.5m unterminated)	61004	275.00
M880 Cut-to-Fit Loom (2.5m unterminated)	61005	P.O.A.
ADL Cut-to-Fit Loom (3m unterminated)	61020	325.00
ADL2 Cut-to-Fit Loom with USB (3m unterminated)	61099	350.00
ADL3 Cut-to-Fit Loom (3m unterminated)	61213	395.00
SDL Cut-to-Fit Loom (3m unterminated)	61023	300.00
SDL3 Cut-to-Fit Loom (3m unterminated)	62202	390.00

### ECU Connectors

**Part No.**

**Price**

36 Way MoTeC M4/M48/M8 Connector	65036	32.00
18 Way MoTeC M8/IEX/TCMux/CDI/4 Connector	65018	27.00
34 Way MoTeC M400/M600/M800/E888 Connector	65044	21.00
26 Way MoTeC M400/M600/M800/E888 Connector	65045	20.00
M800 Series Connector Kit	95560	39.00
Mitsubishi/Subaru ECU Connectors (16,22 & 26 way )	69012,3,4	25.00

#### ECU Connector Spare Pins

M800 Spares Pins	65546	0.16ea
M4/M48/M8/IEX/TCM Spare Pins	65024	0.17ea
Seals for M4/M48/M8/IEX/TCMux Pins	65025	0.15ea

**www.motec.com**



**Race smart.**

## Wiring & Connectors

**RETAIL**

**JANUARY 2012**

*All kits contain shell, contacts, and seals. Male/Female descriptions refer to the pin type, not the connector or housing shape.*

### Military Connectors

**Part No.**

**Price**

55 Way M8 Mil Spec ECU Connector

68078

100.00

32 Pin M4/M48 Mil Spec ECU Connector

68079

79.00

10 Pin to D9 Comms Plug Connector (M8, mil spec M4/M48)

68077

53.00

### Autosport (AS) Connectors

**Part No.**

**Price**

#### Autosport AS Connectors

13 way Autosport GPS Connector (AS610-35SA)

68010

59.00

79 way Autosport ADL2 Connector (AS620-35SN)

68080

110.00

26 way Autosport PDM/CDI8 Connector (AS616-26SN)

68086

86.00

22 way Autosport ACL/TCMux/IEX Connector (AS612-35SN)

68087

65.00

8 way Autosport PDM16/32 Connector (AS616-08SN)

68088

96.00

66 way Autosport M880/E816/DBW4 Connector (AS618-35SN)

68089

101.00

55 way Autosport VIM Sensor Connector (AS616-35SN)

68090

81.00

37 way Autosport SDL/PDM Connector (AS614-35SN)

68100

78.00

AS Connector Sockets for MoTeC Product Connectors

68082

0.65ea

AS Connector Filler Plugs

68083

0.59ea

#### Autosport ASL Connectors

5 way ASL BR2/VIM Connector (ASL606-05SN)

68098

30.00

5 way Female ASL Connector (ASL106-05SN)

68102

32.00

5 way Male ASL Connector (ASL606-05PN)

68103

30.00

5 way ASL Ethernet Loom Connector (ASL106-05PN)

79102

25.00

5 way Flanged ASL Ethernet Loom Connector(ASL006-05PN)

79103

30.00

ASL Connector Sockets

68068

3.00ea

ASL Connector Pins

68069

2.00ea

#### Autosport ASU Connectors

3 way Female Autosport (ASU103-03SN)

65120

39.00

3 way Male Autosport (ASU603-03PN)

65121

35.00

ASU Connector Pins

68074

3.00ea

ASU Connector Sockets

68075

4.00ea

### Pressure Sensor Connectors

**Part No.**

**Price**

Delco 1 Bar MAP Sensor Connector

64002

10.00

Delco 3 Bar MAP Sensor Connector

64003

10.00

Standard Pressure Sensor Spare Connector

65013

12.00





**Race smart.**



## Wiring & Connectors

**RETAIL**

**JANUARY 2012**

<b>Bosch Connectors</b>	<b>Part No.</b>	<b>Price</b>
2 Way Male Kit	65007	6.00
2 Way Female Kit	65008	6.00
3 Way Female Kit	65012	6.00
4 Way Female Kit	65140	7.00
5 Way Female Kit	65142	8.00
6 Way Female Kit	65144	11.00
7 Way Female Kit	65010	13.00
<b>DTM Connectors</b>	<b>Part No.</b>	<b>Price</b>
2 Way Female Kit	68050	5.00
2 Way Male Kit	68051	5.00
3 Way Female Kit	68052	6.00
3 Way Male Kit	68053	6.00
4 Way Female Kit	68054	7.00
4 Way Male Kit	68055	7.00
6 Way Female Kit	68056	8.00
6 Way Male Kit	68057	8.00
8 Way Female Kit	68058	10.00
8 Way Male Kit	68059	10.00
12 Way Female Kit	68060	16.00
12 Way Male Kit	68061	16.00
<b>DTP Connectors (for DHB)</b>	<b>Part No.</b>	<b>Price</b>
2 Way Female Kit	79125	8.00
2 Way Male Kit	79121	8.00
<b>AMP Connectors</b>	<b>Part No.</b>	<b>Price</b>
1 Way Female Kit	65216	3.00
1 Way Male Kit	65215	3.00
2 Way Female Kit	65201	3.00
2 Way Male Kit	65200	3.00
3 Way Female Kit	65203	3.00
3 Way Male Kit	65202	3.00
4 Way Female Kit	65205	4.00
4 Way Male Kit	65204	4.00
5 Way Female Kit	65207	5.00
5 Way Male Kit	65206	5.00
6 Way Female Kit	65209	6.00
6 Way Male Kit	65208	6.00



**Race smart.**

## Wiring & Connectors

**RETAIL**

**JANUARY 2012**

<b>Cable</b>			<b>Price</b>
<b>Raychem Type 44 Cable</b>			
	<b>22g</b>	<b>20g</b>	
Black	90111	69999	1.00/m
White	90101	70004	1.00/m
Yellow	90102	70005	1.00/m
Green	90103	70007	1.00/m
Red	90104	70000	1.00/m
Blue	90105	70006	1.00/m
Pink	90106	70010	1.00/m
Brown	90107	70008	1.00/m
Orange	90108	70009	1.00/m
Grey	90109	70011	1.00/m
Violet	90110	70012	1.00/m
<b>Special Cable</b>			
3 Core Cable (22g with PTFE sleeving)		81003	8.00/m
High Temperature Ethernet Cable (for PC Comms)		79350	17.00/m
<b>Heatshrink</b>		<b>Part No.</b>	<b>Price</b>
<b>Heatshrink</b>			
3.2mm diameter		62003	1.35/m
4.8mm diameter		62004	1.55/m
6.4mm diameter		62005	1.65/m
9.5mm diameter		62006	2.25/m
12.7mm diameter		62007	2.50/m
19.0mm diameter		62008	3.65/m
<b>Adhesive-Lined Heatshrink</b>			
3.2mm diameter		62020	5.50/m
6.4mm diameter		62022	7.50/m
12.7mm diameter		62024	10.00/m
19.0mm diameter		62025	12.00/m
<b>Raychem DR25 Heatshrink</b>			
1/8" diameter (3.2mm)		92003	4.20/m
3/16" diameter (4.8mm)		92004	6.00/m
1/4" diameter (6.4mm)		92005	6.15/m
1/2" diameter (12.7mm)		92006	7.45/m
3/4" diameter (19.0mm)		92007	11.40/m





**Race smart.**

## Wiring & Connectors

**RETAIL**

**JANUARY 2012**

### Heatshrink Boots

**Part No.**

**Price**

#### Raychem Heatshrink Boots for MoTeC Products

202K163-25 Boot (ADL2)	65108	14.00
202K153-25 Boot (M880, E816, DBW4, VIM)	65109	12.00
202K142-25 Boot (SDL, ACL, IEX, TCM)	65110	11.00
202K121-25 Heatshrink Boot with Retention Lip	65100	9.00
222K163-25 90 deg Boot (ADL2)	65111	17.00
222K152-25 90 deg Boot (M880, E816, DBW4, VIM)	65112	14.00
222K142-25 90 deg Boot (SDL, ACL, IEX, TCM)	65113	13.00
222K121-25 90 deg Heatshrink Boot	65114	11.00

#### Heatshrink Boots for Sensors

202A111-25 Boot for ASL Connector	65105	7.00
202A111-25/225 Pre-glued Boot for ASL Connector	65106	8.00
202A121-25 Heatshrink Boot	65107	9.00
222A111-25 90 deg Boot for ASL Connector	65115	11.00
Hellermann 1030-4-G Boot for ASL Connector	65122	6.00
Hellermann 1030-4-GW24 Pre-glued Boot for ASL Connector	65116	8.00
Hellermann 1181-4-G 90 deg Boot for ASL Connector	65117	10.00
204W221-25 Boot for ASU Connector	65118	7.00
204W221-25/225 Pre-glued Boot for ASU Connector	65101	7.00
224W221-25 90 deg Boot for ASU Connector	65119	9.00

### Protective Sleeving

**Part No.**

**Price**

*Heat sleeving to protect wiring from extremes of temperature near exhausts or turbos, providing continuous protection up to 200°C, and able to withstand momentary peaks of 350°C.*

5mm diameter Heat Sleeving	92100	9.00/m
10mm diameter Heat Sleeving	92101	13.00/m

### Wiring Tools

**Part No.**

**Price**

#### Crimping & Stripping

MoTeC Military Crimp Tool ( <i>fits all MoTeC mil type pins</i> )	68073	247.00
Packard Crimp Tool	67022	228.00
M800 Crimp Tool	67024	285.00
Universal Wire Stripper	90018	24.00

#### De-Pinning

Autosport 22g De-Pinning Tool ( <i>plastic</i> )	90003	2.00
Autosport 20g De-Pinning Tool ( <i>plastic</i> )	90005	3.00
Autosport 16g De-Pinning Tool ( <i>plastic</i> )	90006	5.00
Delco De-Pinning Tool ( <i>metal</i> )	68001	58.00

**www.motec.com**

### Buttons & Switches

	Part No.	Price
Illuminated 12mm Momentary Button	67100	15.00
Illuminated 12mm Latching Button	67101	15.00
Illuminated 8mm Momentary Button	67102	13.00
Illuminated 8mm Latching Button	67103	13.00
Lenses for 12mm Button ( <i>blue, green, red, yellow</i> )	67506/7/8/9	4.25
Lenses for 8mm Button ( <i>green, red, yellow</i> )	67513/4/5	1.50
Lamps and LEDs for 12mm & 8mm Buttons	67501	1.50
19mm Push Buttons ( <i>blue, green, red, yellow</i> )	67111/2/3/4	10.50
Miniature Toggle Switch ( <i>DPDT</i> )	67201	7.00
Miniature Toggle Switch ( <i>SPDT</i> )	67203	6.00
10 Position Resistive Rotary Switch	56100	105.00
Gear Cut Roller Micro Switch	67115	16.00
2009 Yamaha R1 Gear Position Adaptor ( <i>includes mating half</i> )	79120	79.00

### Handlebar Switch Gear

MoTeC can supply a handlebar switch assembly which can be used to provide functions such as pit speed limiter, ECU map select and traction control on/off and up/down trim.

	Part No.	Price
Motorcycle Handlebar Switch Gear	79105	299.00

### Illumination

	Part No.	Price
ADL2 Voltage Inverter ( <i>for backlit ADL2 only</i> )	61035	151.00
Dimmer Switch For Backlit SDL, ADL2, ADL3	61036	16.00

### SLM

The SLM Shift Light Module features eight full-colour (RGB) LEDs. The lights can be used for Shift Lights, Warning Lights, or other indicators. Each LED is fully independent as to the purpose, colour, and brightness. The SLM works via CAN in conjunction with MoTeC M400/ M600/M800/M880 ECUs, SDL and ADL2 Dash Loggers, and the ACL. An uncased OEM version is available for integration into your won steering wheel design.



	Part No.	Price
SLM Shift Light Module	18120	250.00
SLM OEM ( <i>uncased SLM for steering wheel integration</i> )	18121	231.00
SLM-C Club Shift Light Module ( <i>pre-defined shift pattern</i> )	18122	225.00

### Shift/Warning LEDs

	Part No.	Price
7mm Panel Light ( <i>blue, green, red, yellow</i> )	67520/1/2/3	10.00
10mm Panel Light ( <i>green, red, yellow</i> )	67540/1/2	12.00
10mm Panel Light ( <i>tri-colour</i> )	67543	16.00
Multi-Coloured LED Array ( <i>low cost alternative to SLM</i> )	68007	25.00



**Race smart.*****“Race smart.” Clothing*****RETAIL****JANUARY 2012****“Race smart.” Clothing****Part No.****Price**

Get the MoTeC look with our eyecatching “Race smart.” gear! The range includes a cap, polo shirt, and jacket. Images and more information can be seen on the website at [www.motec.com.au/aboutmerchandise/merchandiseoverview](http://www.motec.com.au/aboutmerchandise/merchandiseoverview). Please contact us to discuss sizing availability before placing your order

“Race smart” Cap 99512 10.00

“Race smart” Polo Shirt See Table 25.00

“Race smart” Jacket See Table 75.00

ITEM	SIZE					
	S	M	L	XL	2XL	3XL
Polo Shirt	99500	99501	99502	99503	99504	99505
Jacket	99506	99507	99508	99509	99510	99511

***Training & Support Services*****MoTeC Training Seminars****Duration****Price**

MoTeC offer in-house product training seminars, covering the installation and set-up of Engine Management Systems, or Data Acquisition Systems. The seminars are held at MoTeC Europe in Adderbury, with course literature, lunch, and refreshments all provided. Please contact us to discuss your requirements further. Price quoted is per person.

MoTeC ECU Training 1 Day 150.00

MoTeC Data Acquisition and Analysis Training 1 Day 150.00

**Technical Field Support****Duration****Price**

In addition to telephone support, MoTeC regularly supplies Technical Support Engineers for Track Support or on-site Tuning & Training. Contact us to enquire about booking a MoTeC Technical Support Engineer for assistance with set up and configuration of MoTeC products and systems.

MoTeC Field Support in the UK (exclusive of expenses) 1 Day 350.00

MoTeC Field Support in Europe (exclusive of expenses) 1 Day 400.00

MoTeC Field Support in R.O.W. (exclusive of expenses) 1 Day 450.00

**Repairs, Testing, & Upgrades****Price**

If any of your MoTeC products require testing or repair, or require upgrade, **please contact us to obtain a Return Material Authorisation (RMA) number**. Repair costs for your unit depend on individual circumstances

**Testing**

MoTeC Hardware Testing 30.00

Sensor Testing & Calibration (please contact us) P.O.A.

**Upgrades**

ADL2 Backlight Conversion—Upgrade ADL2 to Backlit 750.00

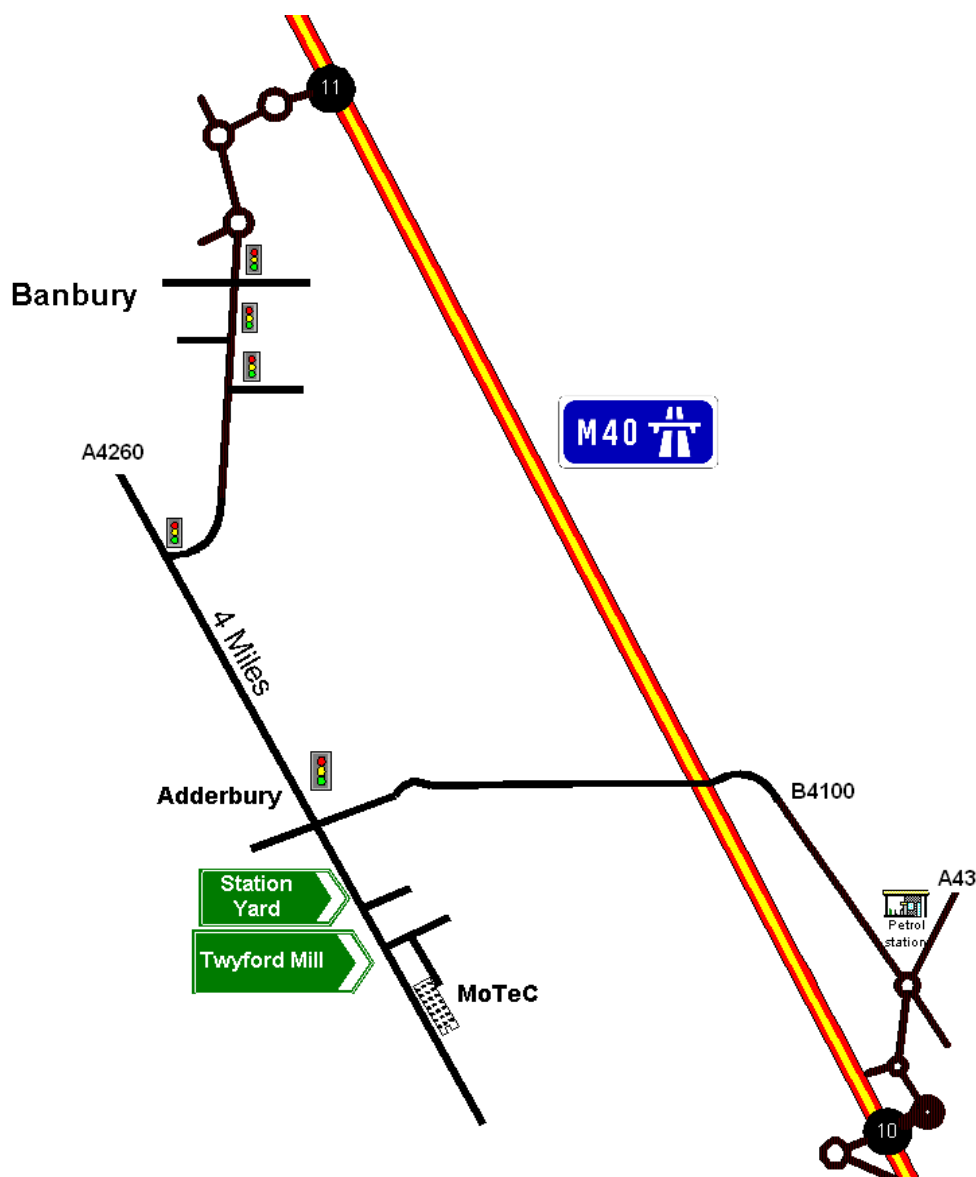
SDL Backlight Conversion -Upgrade SDL to Backlit 560.00

Replace Screen on ADL2 or SDL2 410.00

MDD or PLM Firmware Upgrade F.O.C.

**www.motec.com**

### ***Where to find us***



### ***Directions***

Leave the M40 at J10 and follow signs for the A43 north. Turn left at the Esso garage roundabout onto the B4100. Follow for 7 miles into Adderbury. At the traffic lights turn left, continue past the Red Lion pub. Take the second left outside the village sign posted Twyford Mill (Fired Earth site)

### ***Address***

MoTeC (Europe) Ltd  
Unit 14, Twyford Mill Ind. Est.  
Oxford Road  
Adderbury  
OX17 3SX